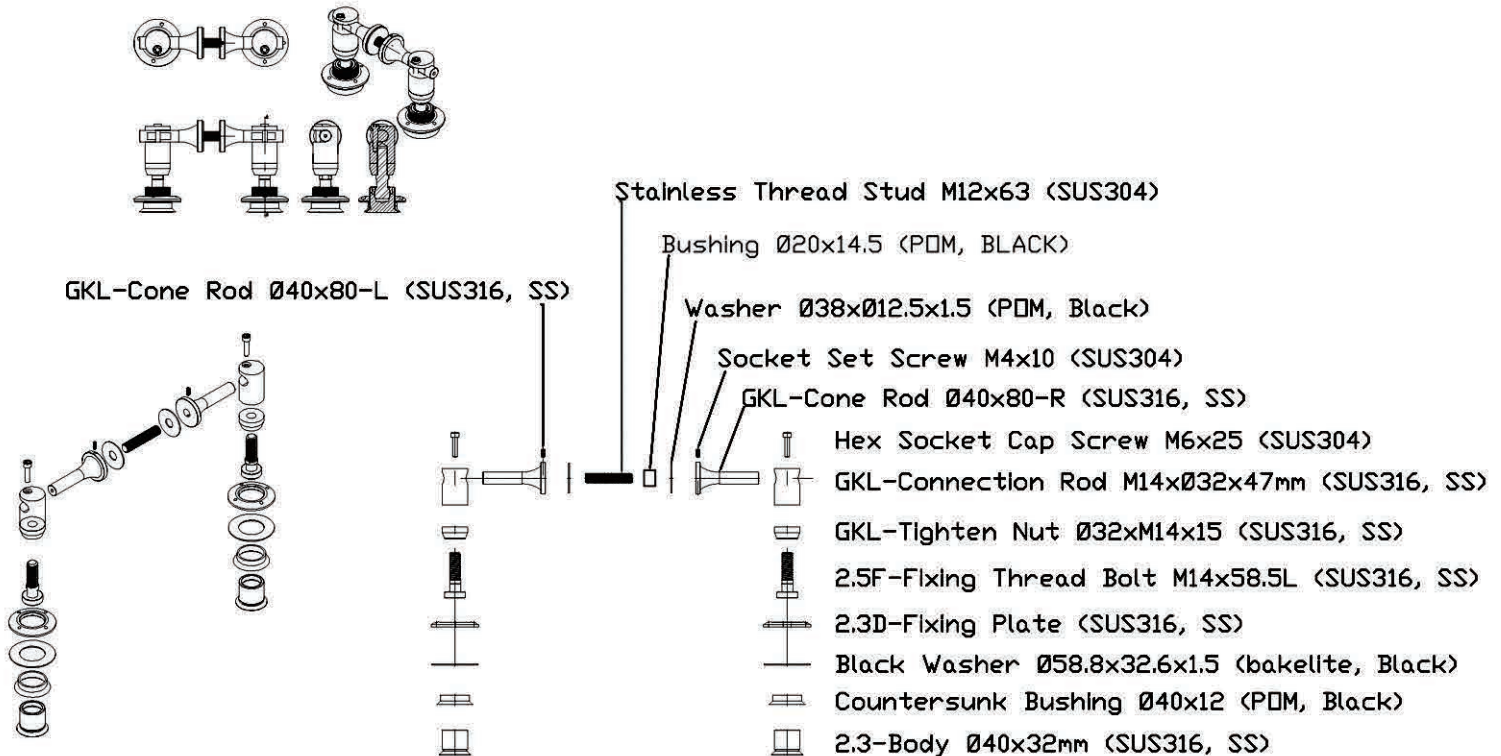


## GKL02-2.3F



### INSTALLATION GUIDE INSTRUCTION FOR GKL-02-2.3F

- ① INSERT CONE ROD (A) TO CONNECTION ROD (B) (SEE FIG. 1)
- ② THEN INSERT THE HEX SOCKET CAP SCREW (C) TO CONNECTION ROD (B) (SEE FIG. 1)  
\*Don't tighten the screw now for a later position adjustment
- ③ PUT WASHER (E) TO CONE ROD (A) (SEE FIG.1)
- ④ INSERT STAINLESS THREAD STUD (F) TO CONE ROD (A) (SEE FIG.1)  
\*Insert bushing (M) to stainless thread stud if glass fin is applied
- ⑤ INSERT SOCKET SET SCREW (D) TO CONE ROD (A) (SEE FIG.1)  
\*Don't tighten the screw now for a later position adjustment
- ⑥ THEN INSTALL THE ASSEMBLE MECHANISM TO GLASSFIN. (SEE FIG.2)
- ⑦ THEN TIGHTEN THE SOCKET SET SCREW (D) WHEN YOU ACHIVED THE PROPER ALIGNMENT OF THE MECHANISM TO GLASSWALL COUNTERSUNK HOLE.(SEE FIG. 3)
- ⑧ INSERT THE BLACK POM COUNTER SUNK BUSHING (I) TO THE GLASSWALL COUNTERSUNK HOLE. (SEE FIG.4)
- ⑨ FIRST PLACE FIXING PLATE (G), BLACK BAKELITE WASHER(H), AND TIGHTEN NUT(J) IN THE RIGHT SEQUENCE BETWEEN CONNECTION ROD (B) AND GLASS PANEL  
THEN PLACE 2.5F-FIXING THREAD BOLT (L) TO CONJOIN ALL THE PREVIOUS PARTS AND 2.3-BODY (K) FROM OUTSIDE (SEE FIG.5)
- ⑩ ADJUST TIGHTEN NUT (J) FOR VERTICAL POSITIONING FROM CONE ROD TO GLASS PANEL, AND THEN TIGHTEN IT  
MOVE THE CONJOINED PART OF CONNECTION ROD AND 2.3F FIXING BOLT HORIZONTALLY TO POINT IT TO THE CENTER OF COUNTER SUNK, AND THEN TIGHTEN HEX SOCKET CAP SCREW (C) (SEE FIG.6)

# EPCO | INSTALLATION GUIDE

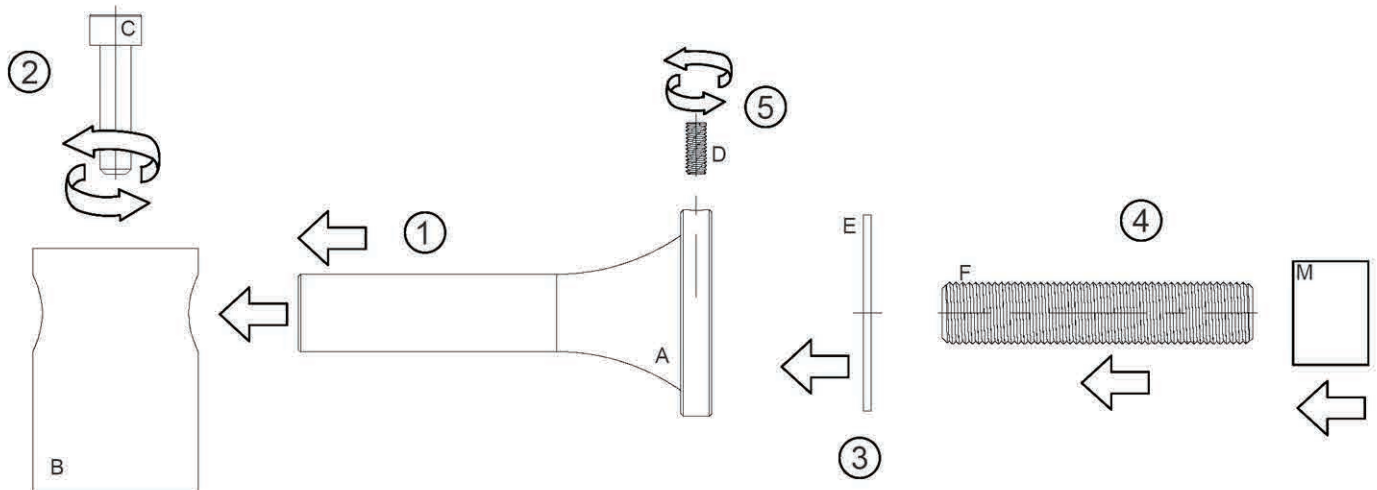


FIG. 1

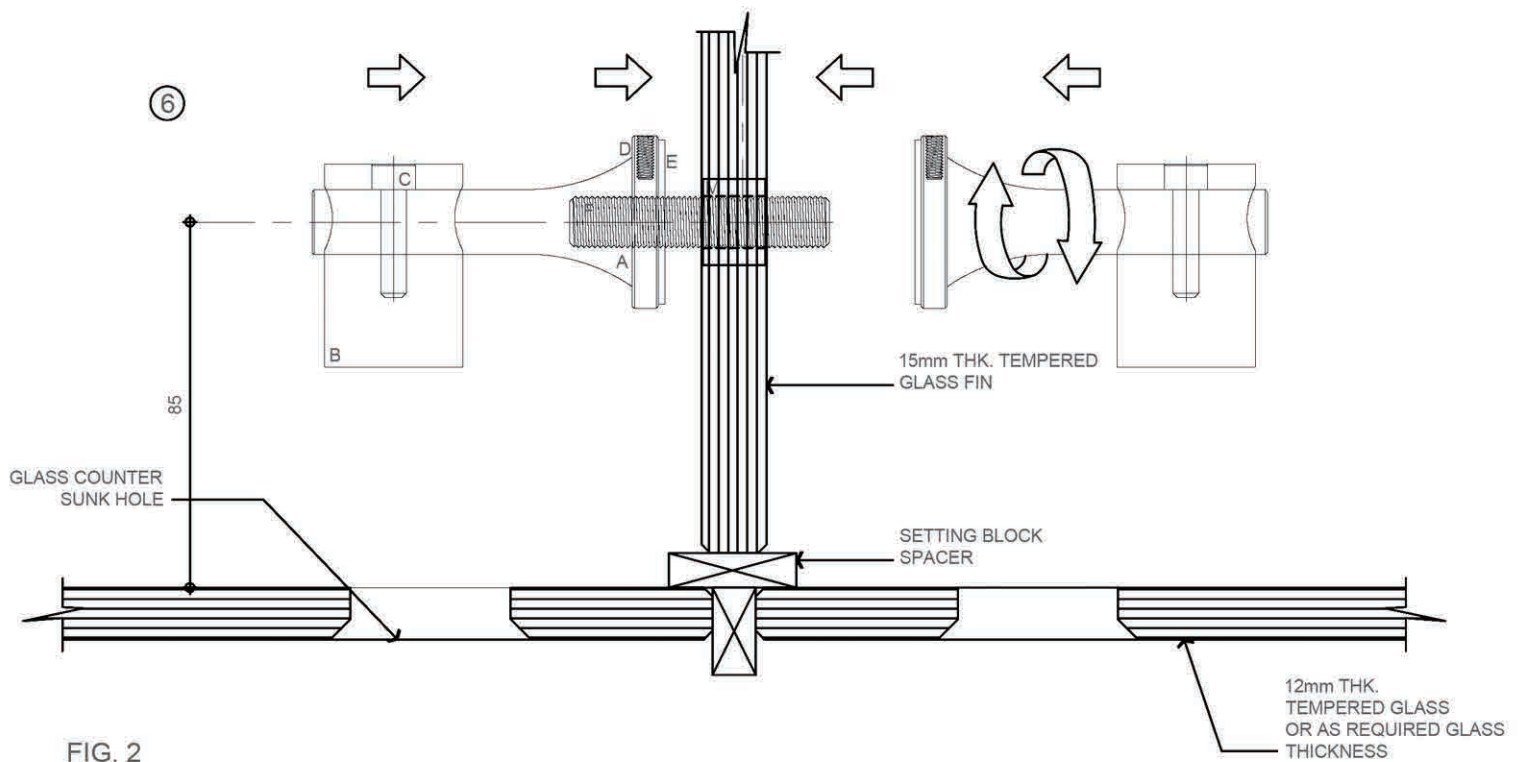


FIG. 2

# EPCO | INSTALLATION GUIDE

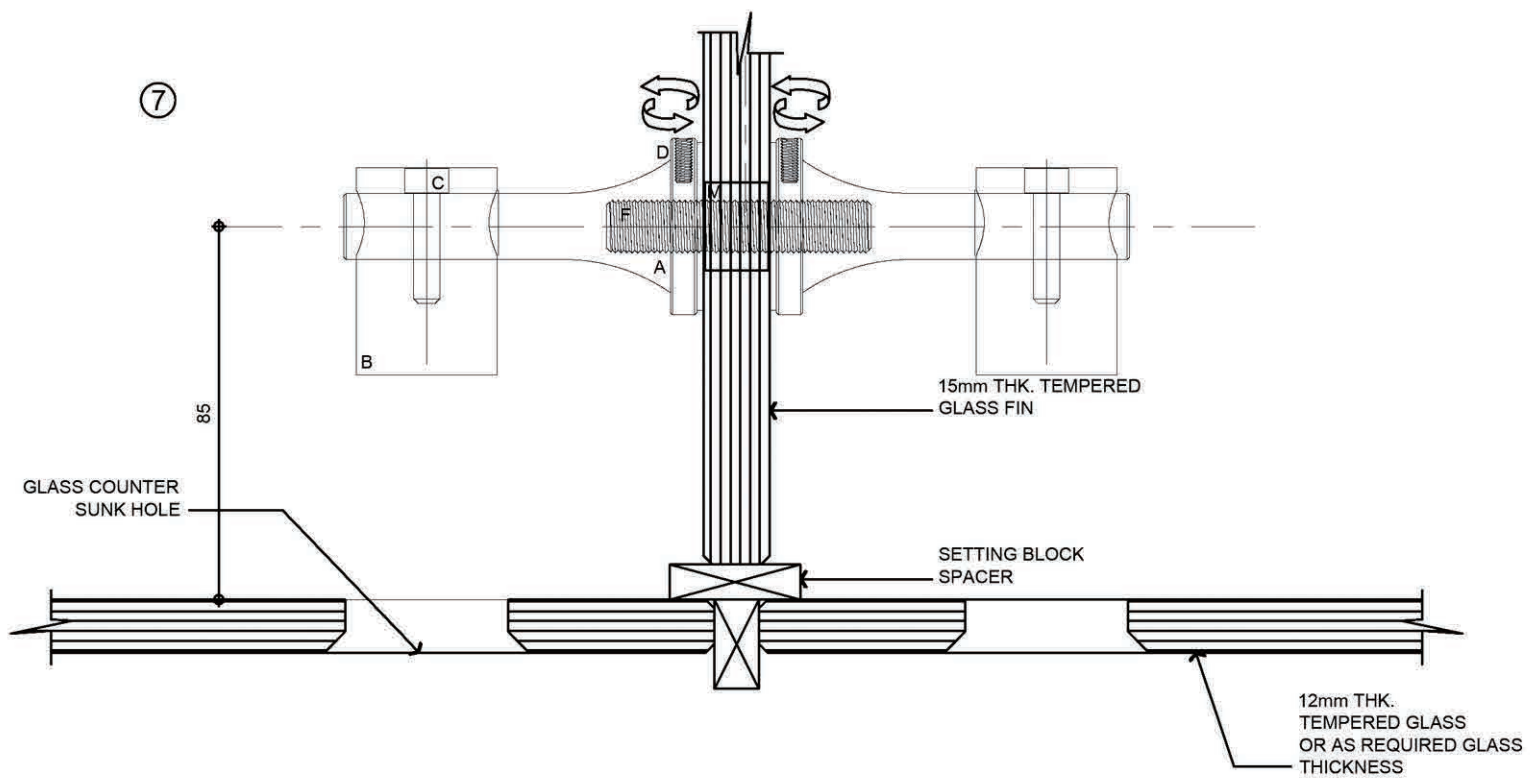


FIG. 3

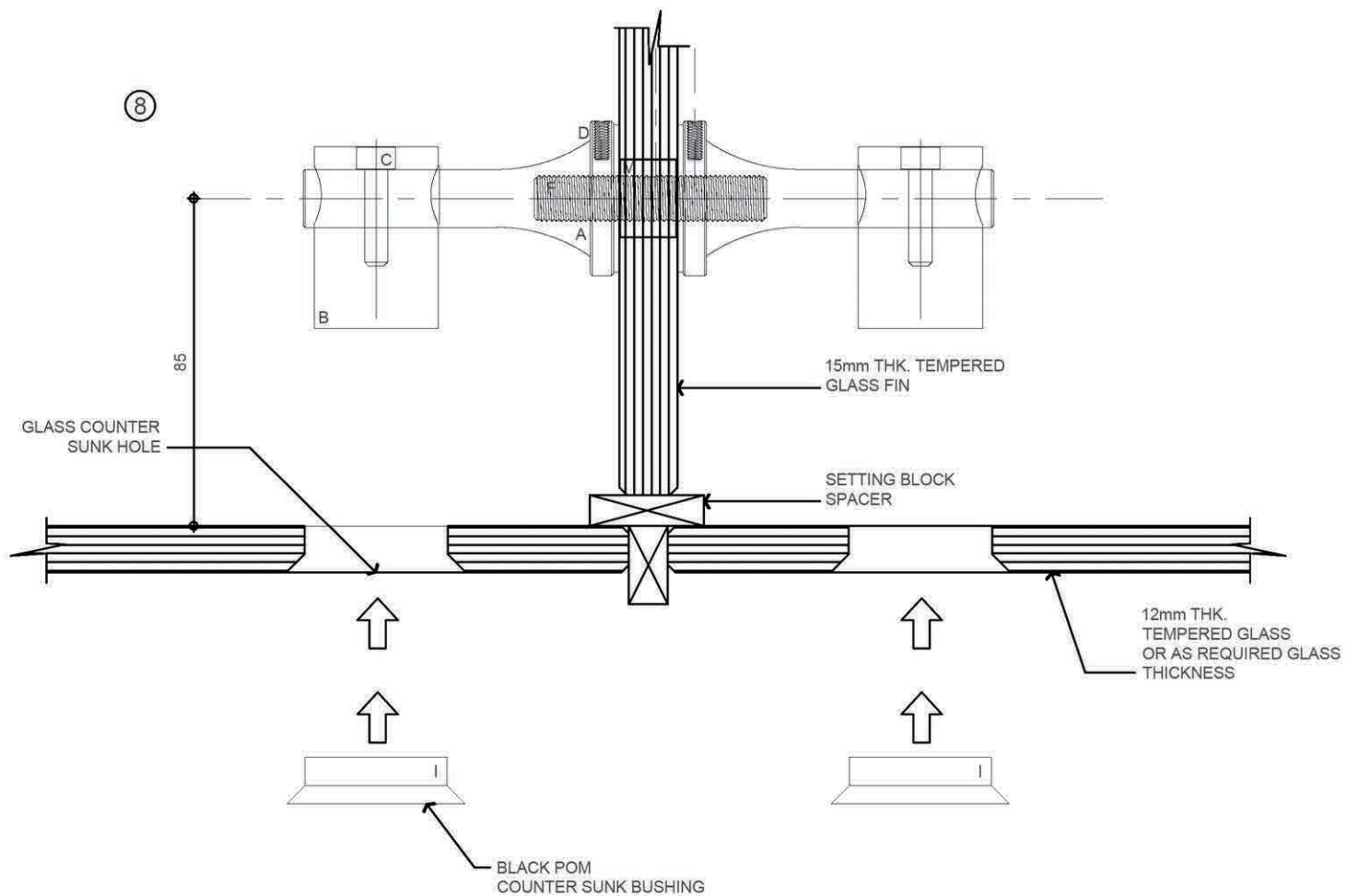


FIG. 4

# EPCO INSTALLATION GUIDE

