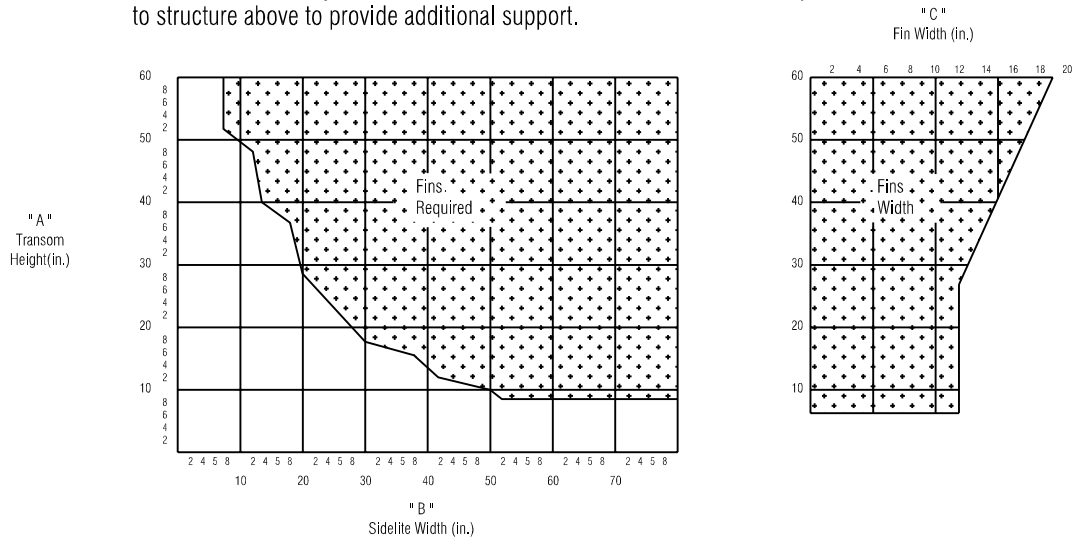
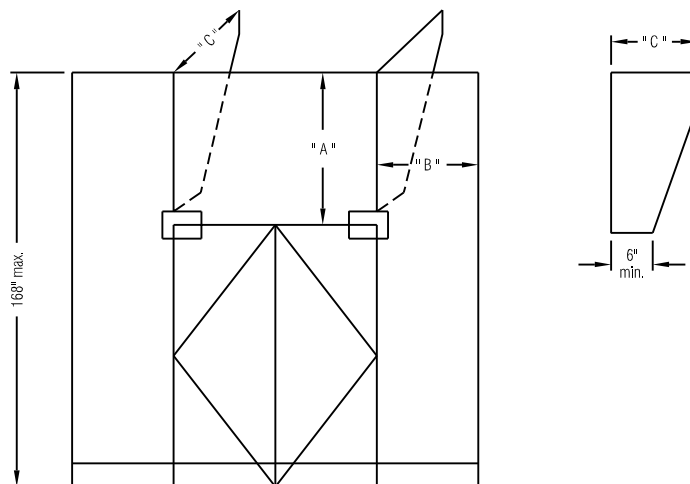


Risk of excessive deflection increases as the distance from the door upper pivot to structure increases. To reduce deflection, glass fins mounted perpendicular to the glass wall should be employed. Refer to the graph below for fin usage recommendations.

Note: When fins are used they must always be mechanically fastened to adequate support. We recommend that fittings, or "pinning" through back to back angles be used. If transom weight exceeds 100 lbs., it should also be mechanically fastened to structure above to provide additional support.



Note: This graph constitutes our general recommendations only. Individual situation and site conditions may require additional support to adequately reduce deflection.



To use the graph, determine the height of the transom (dimension "A") as well as the width of the sidelite (or total width to nearest support point in the case of multiple sidelites) (dimension "B") as shown in the elevation. Locate the intersecting point of these two grids on the graph. If this intersecting point falls within the grey area of the graph, fins are required. Next, determine fin top width (dimension "C") on the scale by matching transom height (dimension "A").